

EXPERIENCE FLAMES AND REAL HEAT WITH A PROPANE SYSTEM.



LION[®]
ready for action

Realistic Live-Fire Skill-Building with the
Magnum[™] Hoseline & Extinguisher Training



Create
multiple
scenarios with
interchangeable
props

Whether they use a fire extinguisher or hose line, your firefighters will feel the heat when fighting the **LION MAGNUM Hose Line & Fire Extinguisher Training System**.

The system has an output of 2.8 million BTU (550KW,) providing a realistic fire for full scale hands-on training. Smart controls shut down

the propane and auto ignition only if the fire is knocked out completed to make sure they learn the skill and gain muscle memory.

With intense flames and rugged construction **MAGNUM** is designed for full-scale firefighter training and can be hit with nearly anything in

your firefighting arsenal. Built-in wheels and easy set-up allow you to quickly create challenging training scenarios.

Magnum[™]

A REALISTIC FIRE FOR FULL-SCALE HANDS-ON TRAINING



AVAILABLE PRODUCTS: A. MAGNUM B. Hand held Controller C. Computer Monitor Prop D. Electric Motor Prop E. Trash Can Prop F. 60 lb (27kg) Propane Tank
(Not Shown: Propane Supply Cart and Recharger)



NOTE: Product availability and design may differ based on market location.

Specifications

CENTRAL PILOT

The industrial-grade pilot is located in the center of the system, allowing for rapid ignition and maximum burn area. The Magnum pilot is the same ignition system used in fixed firefighter training facilities.

FLAME TYPE SELECTION

Dual burners allow you to select either pressurized vapor fires or liquid surface fires.

SMART CONTROLS

If the trainee fully extinguishes the flames, on-board sensors shut off the propane supply, signaling a successful evolution.

ADD-ON PROPS

Enhance the realism of your training and prepare for different scenarios with our add-on props. Choose from the trash can prop, propane tank prop and computer monitor prop.

SAFETY FEATURES

- ▶ Built in Emergency-Stop
- ▶ Auto-Ignition Pilot
- ▶ Infrared Flame Safety Sensor for Propane Control

PORTABLE

Built in handle and wheels allow for easy transport and set up.

PHYSICAL SPECIFICATIONS PROPANE STAND

- ▶ **Dimensions (L x W x H):** 29" x 15" x 54" (73.66 x 38.1 x 137.16 cm)
- ▶ **Type of Gas Used:** Propane Gas (Two Cylinders, 50 lb. or 60 lb.) (23kg. or 27kg.)
- ▶ **Adjustable Reducing Valve:** Rechargeable NiMH 7.2 V

BURN PAN

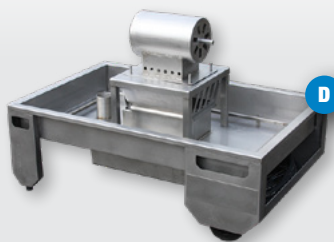
- ▶ **Dimensions (L x W x H):** 49" x 31" x 23" (124.46 x 78.74 x 58.42 cm)

- ▶ **Weight:** 140 lb. (63.5kg)
- ▶ **Depth of Waterbed:** 6" (15.24 cm)
- ▶ **Material:** Stainless Steel
- ▶ **Fuel Type:** Propane
- ▶ **Maximum Power:** 2,992,448 btu/h (877 kW)
- ▶ **Flame Height (Normal Max):** 9 ft. (2.74 m)
- ▶ **Length of Gas Hose:** 20' (6.10 m)
- ▶ **Cable Length for Remote Control:** 25' (7.62 m)

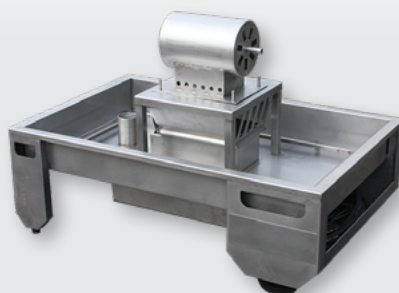
- ▶ **Electrical:** Internal Battery

CHARGER

- ▶ **Input Voltage:** 120 VAC — 2 Amp and is fully adjustable up to 60 pounds (27.21 kg).
- ▶ **Charging Time:** 6-8 hours
- ▶ **Usage Cycle per Charging Cycle:** Four Hours Continuous Burn Time



A REALISTIC FIRE FOR FULL-SCALE HANDS-ON TRAINING



Popular Packages

COMPONENT	BASE
Magnum Hose Line & Fire Extinguisher Trainer	1
ADD ONS	QTY
60 lb Propane Tank for Magnum	2
Magnum Trash Can Prop	1
Magnum Electric Motor Prop	1
Magnum Flat Screen Computer Monitor Prop	1
Magnum Prop Base (Required to use props)	1